

额定功率(Rated Power):128kW@2100rpm 操作重量(Operating Weight):13200Kg 额定斗容(Rated Bucket Capacity):2.3m<sup>3</sup>



- Equipped with Cummins engine.
- Mature components for 5-ton-load loaders are used for stable performance.
- Easy, accurate and flexible pilot control.
- Single handle gearshift control make operator easy and convenient.

Optional Attachment



防滚翻 ROPS Fram    破碎锤 Breaker    侧卸 Side-dump Bucket    加长臂 Extension Arm    岩石斗(2.2m<sup>3</sup>) Rock Bucket    煤斗(3.0m<sup>3</sup>) Coal Bucket    矿石斗(2.0m<sup>3</sup>) Mineral Bucket



Wheel Loader



Motor Grader



Excavator



Backhoe Loader



Vibratory Roller



Pneumatic Roller



Bulldozer



Crane Truck



Paver



DEALER:

**发动机(Engine)**

型号.....东风康明斯 6BTA5.9  
 Model.....DongFeng Cummins 6BTA5.9  
 型式.....直喷、涡轮增压、水冷  
 Type.....Direct injection, turbocharged, water cooling  
 额定功率Rated Power.....128kW  
 额定转速Rated Speed.....2100rpm

**变速系统 (Transmission System)**

变矩器型式.....双级单相四元件  
 Torque converter type...Double stage, single phase and 4-elements  
 冷却方式.....油冷压力循环式  
 Cooling mode.....Oil cooling pressure circulating  
 变速箱型式.....行星齿轮式动力换挡  
 Transmission type.....Planetary gear power shift  
 档位 (前进/后退) .....前二后一  
 Shifts (Forward/Backward).....F2/R1  
 行驶速度(km/h) Traveling speed | I | II  
 前进 Forward | 11 | 36  
 后退 Backward | 15

**驱动桥 (Axles)**

最大牵引力 Max. drawing force.....120kN  
 主传动速比 Gear ratio of main drive.....5.286  
 轮边减速比 Gear ratio of hub reduction.....4.4  
 最大爬坡能力 Max. gradient capacity.....30°

**转向系统 (Steering System)**

型式.....中间铰接、负荷传感全液压转向  
 Type.....Middle articulated frame, load sensing full hydraulic steering  
 转向角 Steering angle.....±38°  
 最小转弯半径Min.steering radius outside of rear wheel.....5730mm  
 系统压力 System pressure.....14MPa  
 发动机额定转速时的流量.....132L/min  
 Flow rate at engine rated speed.....132L/min  
 转向油缸数-缸径×行程.....2--∅70×460mm  
 No.of cylinders-Bore×Stroke.....2--∅70×460mm

**驾驶室 (Cabin)**

Vibration-absorbed humanistic cabin and streamline dashboard provide low noise、comfortable operation and wide eyeshot.

**工作装置 (Working Equipment)**

单摇臂高支点优化设计的工作装置, 自动放平作为选装件。  
 Single swing arm high fulcrum working equipment, Automatic leveling device is an option.  
 最大掘起力 Max.breakout force.....134kN  
 卸载高度 Dumping clearance.....2815mm  
 卸载距离 Dumping reach.....1050mm

**工作液压系统 (Working Hydraulic System)**

型式 Type.....双手柄先导操纵 double handle pilot control  
 系统压力 System pressure.....18MPa  
 发动机额定转速时的流量.....294L/min  
 Flow rate at engine rated speed.....294L/min  
 油缸数量-缸径×行程 No. of cylinders-Bore×Stroke  
 举升油缸 Lifting cylinder.....2-∅150×695mm.  
 翻斗油缸 Tilting cylinder.....1-∅180×468mm.  
 提升时间 Lifting time.....6.2s  
 下降时间 Lowering time.....3.8s  
 卸载时间 Dumping time.....1.8s

**轮胎 (Tyre)**

轮胎规格 Tyre size.....20.5-25-16PR

**制动系统 (Brake System)**

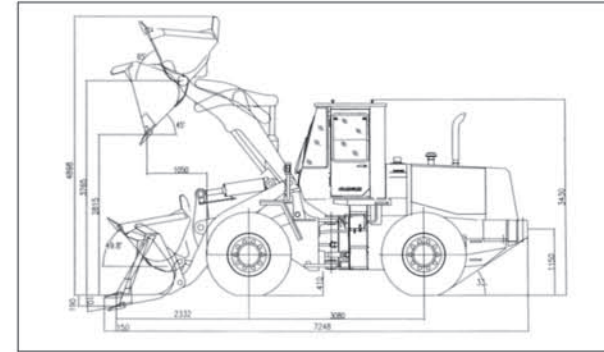
行车制动.....双腔双管路气顶油钳盘式四轮制动  
 Service Brake.....Dual chamber dual piping air-over-oil caliper disc brake, actuate 4 wheels.  
 停车制动.....手动气控鼓式制动器, 可作为紧急制动  
 Parking brake.....Manual air-controlled actuate drum brake act as emergency brake

**油量 (Refill Capacity)**

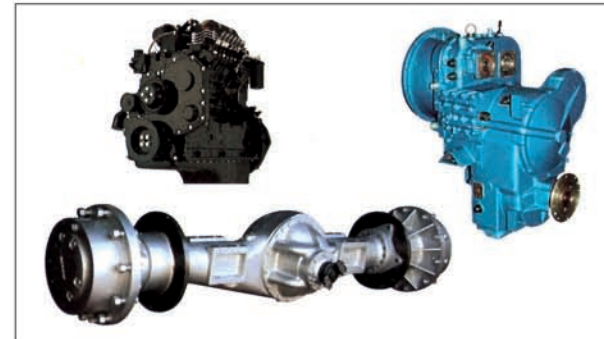
燃油箱 Fuel tank.....200L  
 发动机曲轴箱 Engine crank case.....13.5L  
 双变系统 T/C and T/M.....45L  
 液压油箱 Hydraulic tank.....150L  
 前后桥 F/R axles.....36L(for each)

**标准配置 (Standard Equipment)**

Pilot control valve, Bergstrom air conditioner.



**Best Matched Power Train**



- Adopted Cummins engine that features large power reservation, low oil consumption and good power performance.
- Single handle F2/R1 shifting control improves working efficiency.
- Long-time tested CHANGLIN brand driving axles more suitable for tough working conditions.

**Advanced & Reliable Brake System**

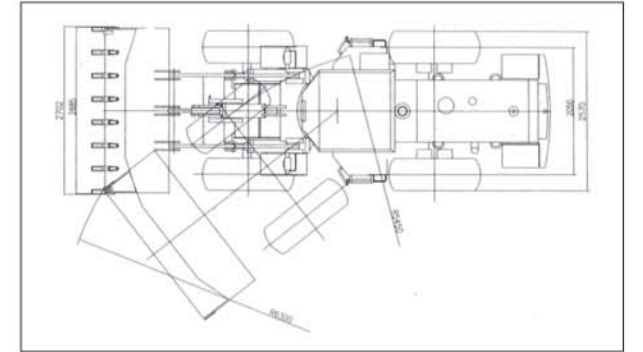


- Axle housing and hub reduction adopted separate structure that features low maintenance cost.
- Dual piping service brake with caliper disc brake ensures safety and reliability.

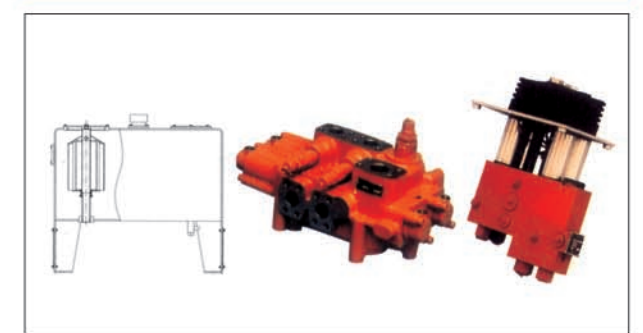
**Comfortable Cabin**



- Cabin featured luxury interior decoration and beautiful appearance and good eyeshot.



**High Efficiency Hydraulic System**



- Pipe joints adopted advanced sealing method ensure better sealing effect.
- Combined flow of two pumps saves energy and increases efficiency.
- Hydraulic tank with vacuum device ensures easy maintenance and fixing of hydraulic system.

**Heavy-duty Working Equipment**



- The optimized strengthened front/rear frame was more solid and durable, single-plate structure of rear frame reduce distortion and irregular welds and greatly promote reliability.
- The working equipment with optimized design of single swing arm has big break force and high working efficiency.



Construction Machinery